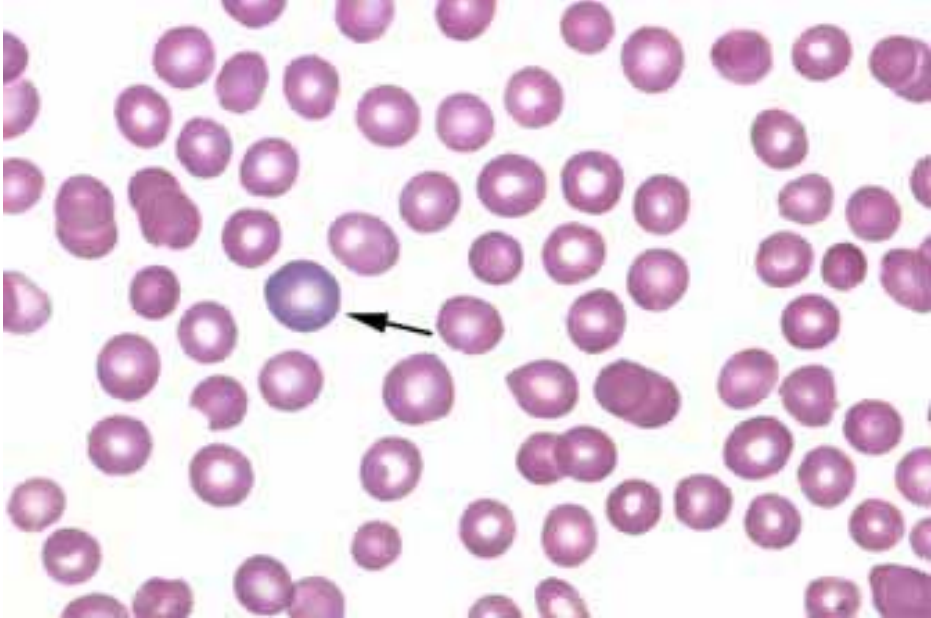
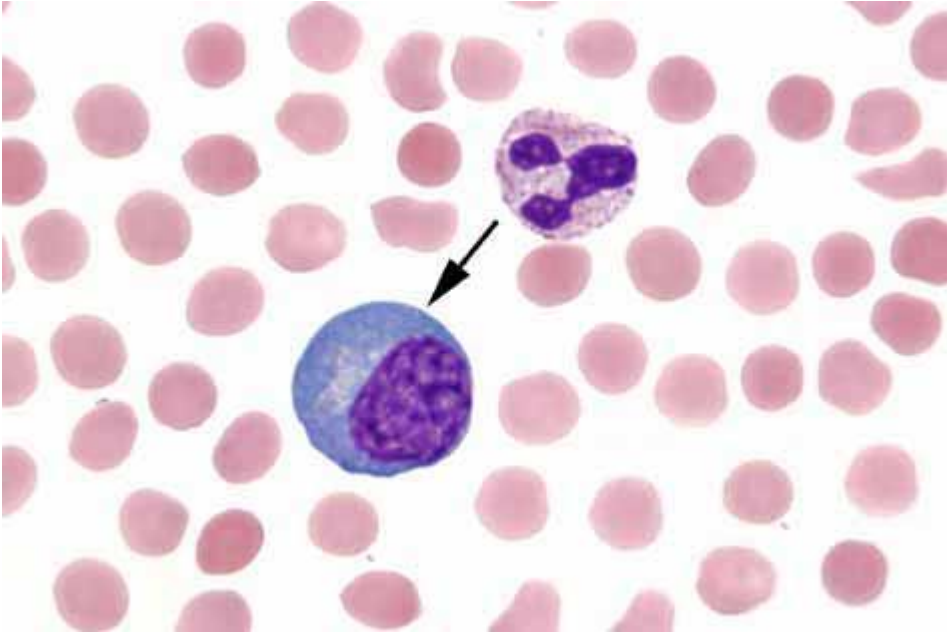
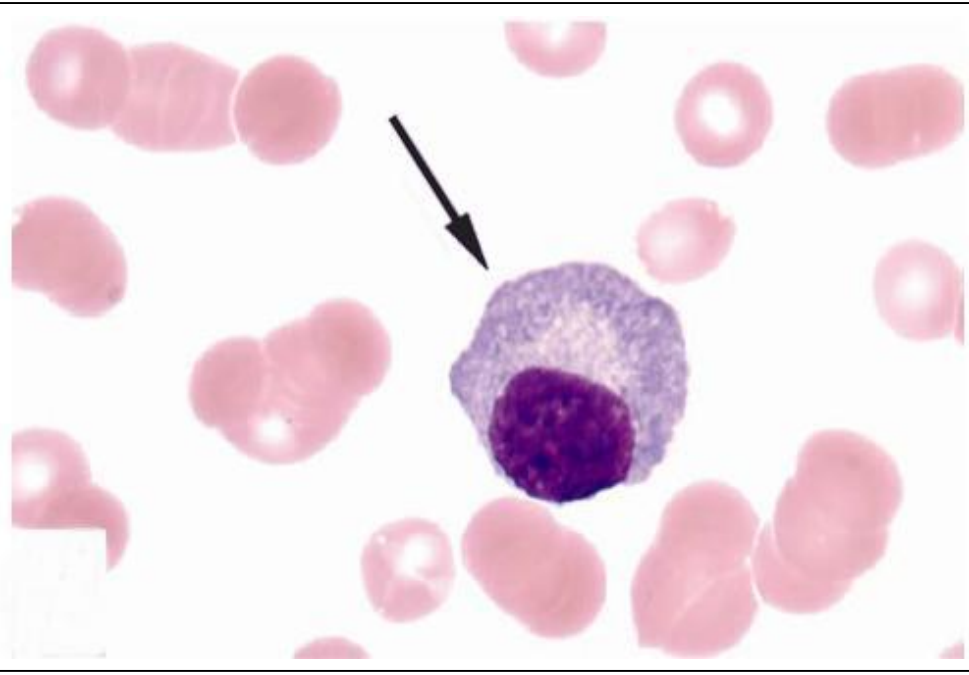


2022 年第 1 次显微镜形态学室间质量评价

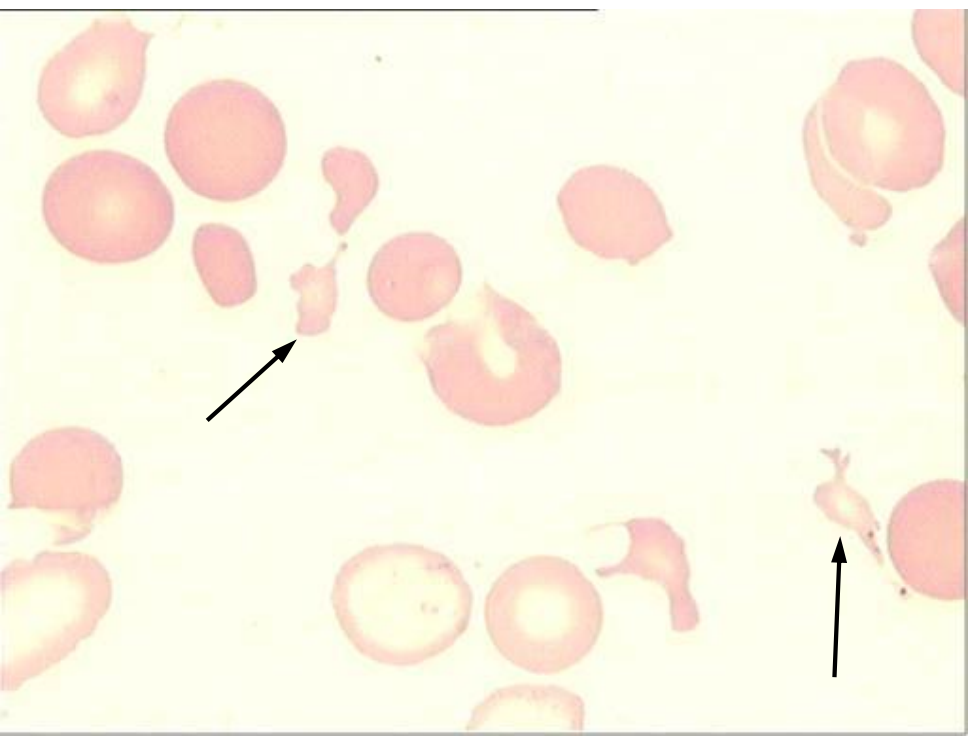
序号	图片	说明
22101		请报告箭头所指细胞 的名称
22102		请报告箭头所指细胞 的名称

22103



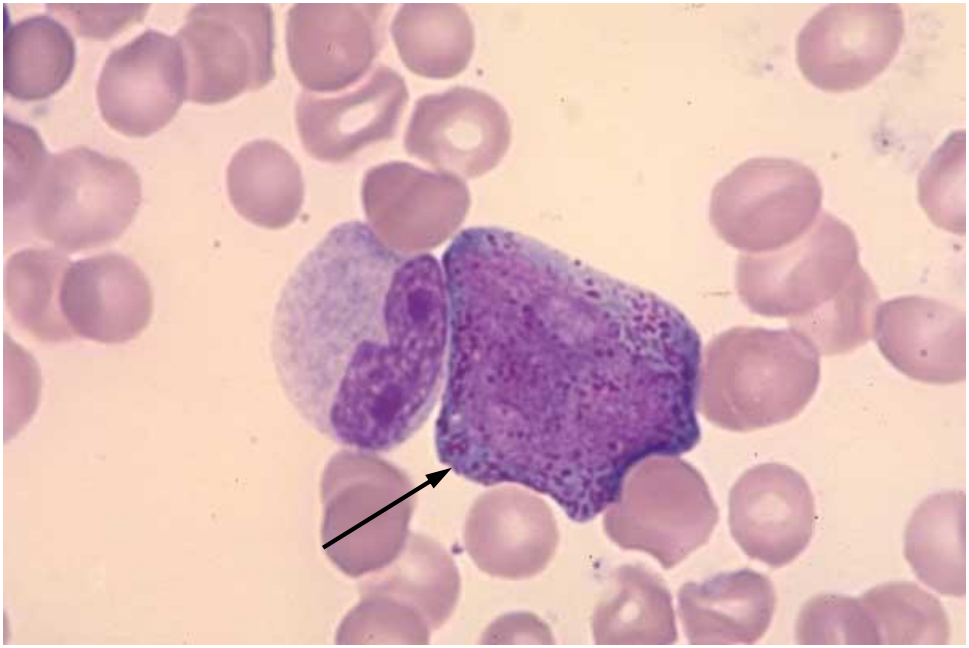
请报告箭头所指细胞
的名称

22104



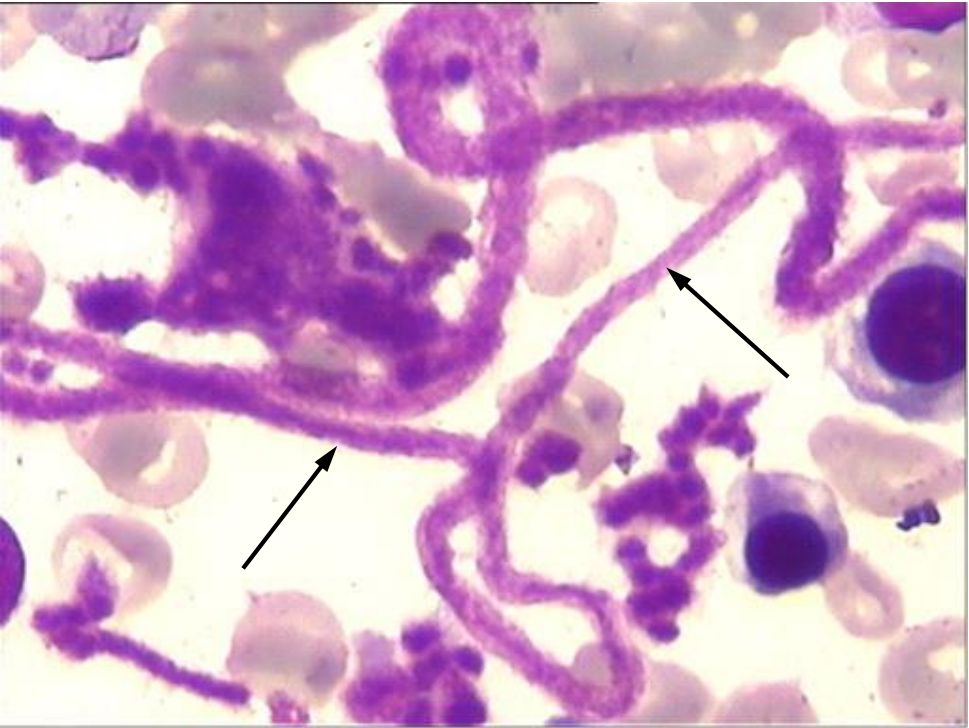
请报告箭头所指细胞
的名称

22105



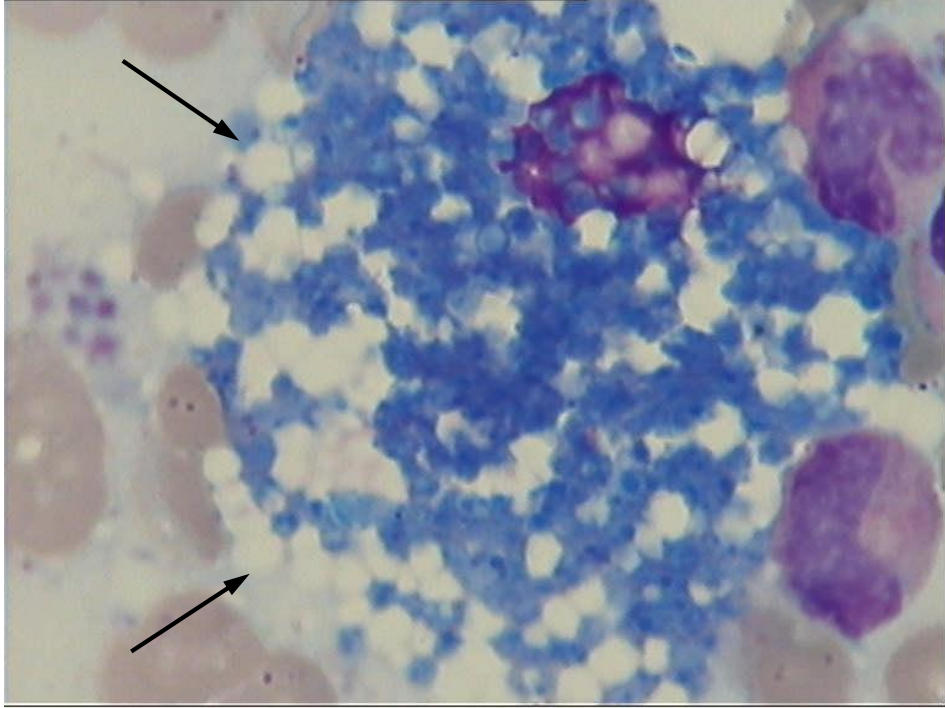
请报告箭头所指细胞
的名称

22106



请报告箭头所指物
的名称

22107


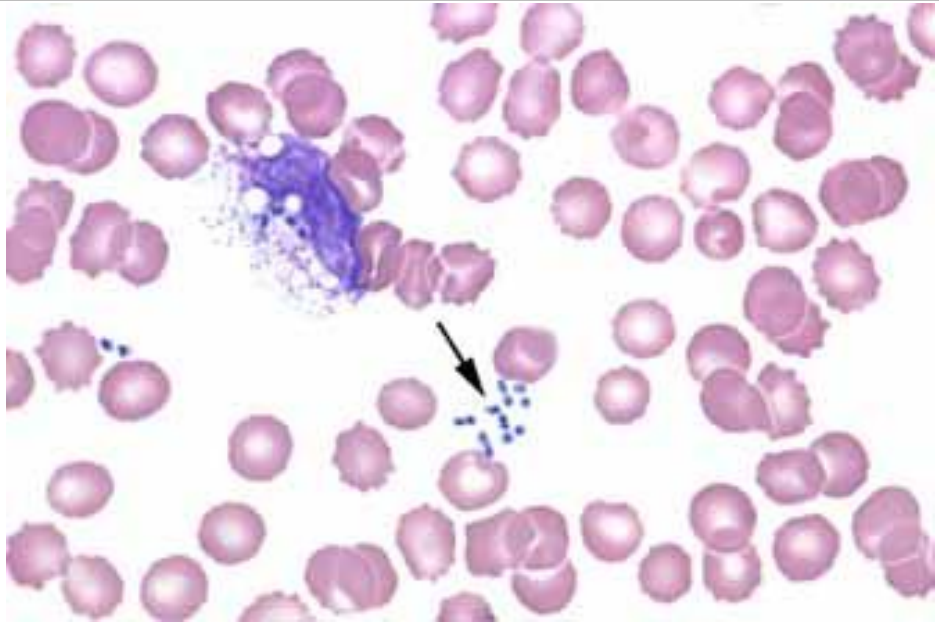


请报告箭头所指细胞的名称

22108



请报告箭头所指细胞的名称

22109	 A microscopic view of a blood smear stained with Giemsa. The field is populated with numerous red blood cells of various sizes and shapes. A single platelet is highlighted with a black arrow, appearing as a small, dark purple, circular body.	请报告箭头所指物的名称
22110	 A microscopic view of a blood smear stained with Giemsa. The field is populated with numerous red blood cells. A large, dark purple, irregularly shaped cell is visible in the upper left. A black arrow points to a small, dark purple, circular body, which is a platelet.	请报告箭头所指物的名称